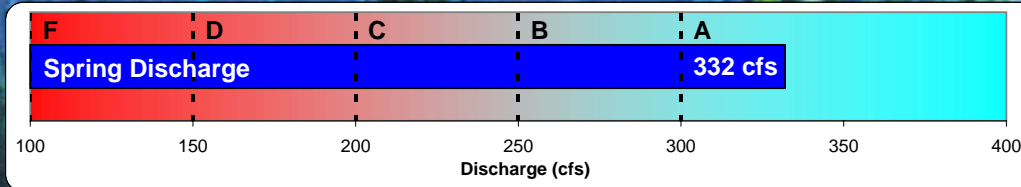


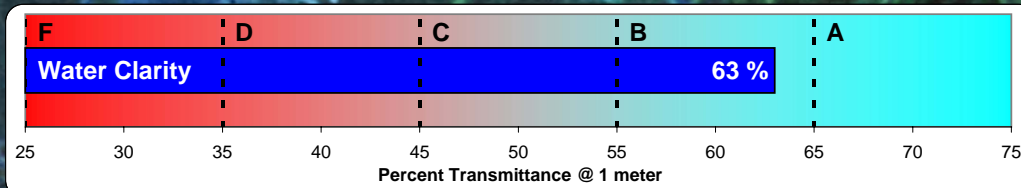
ICHETUCKNEE SPRINGS AND RIVER ENVIRONMENTAL HEALTH - 2008 REPORT CARD

2008 GRADE

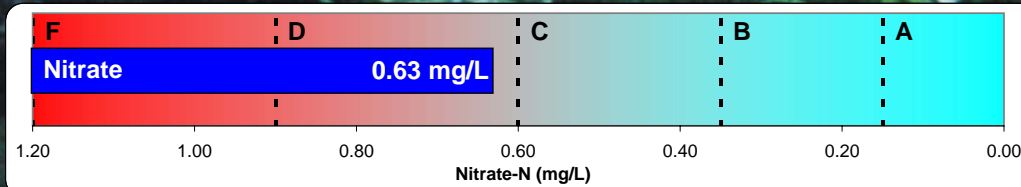
B-



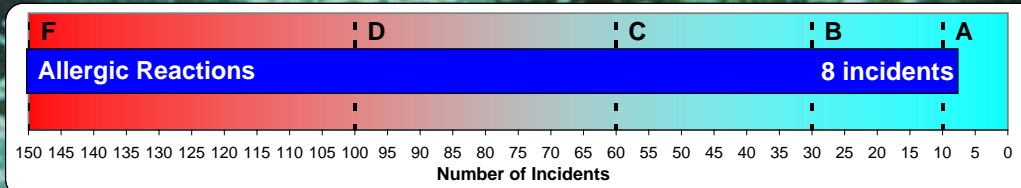
A



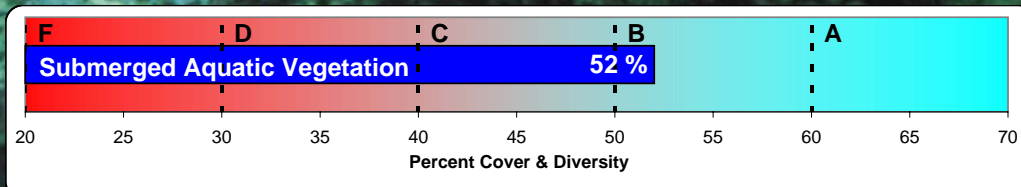
B+



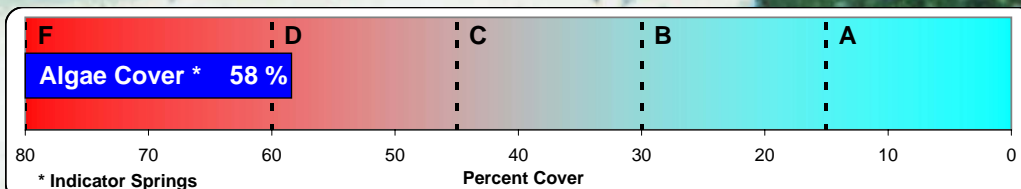
D+



A-

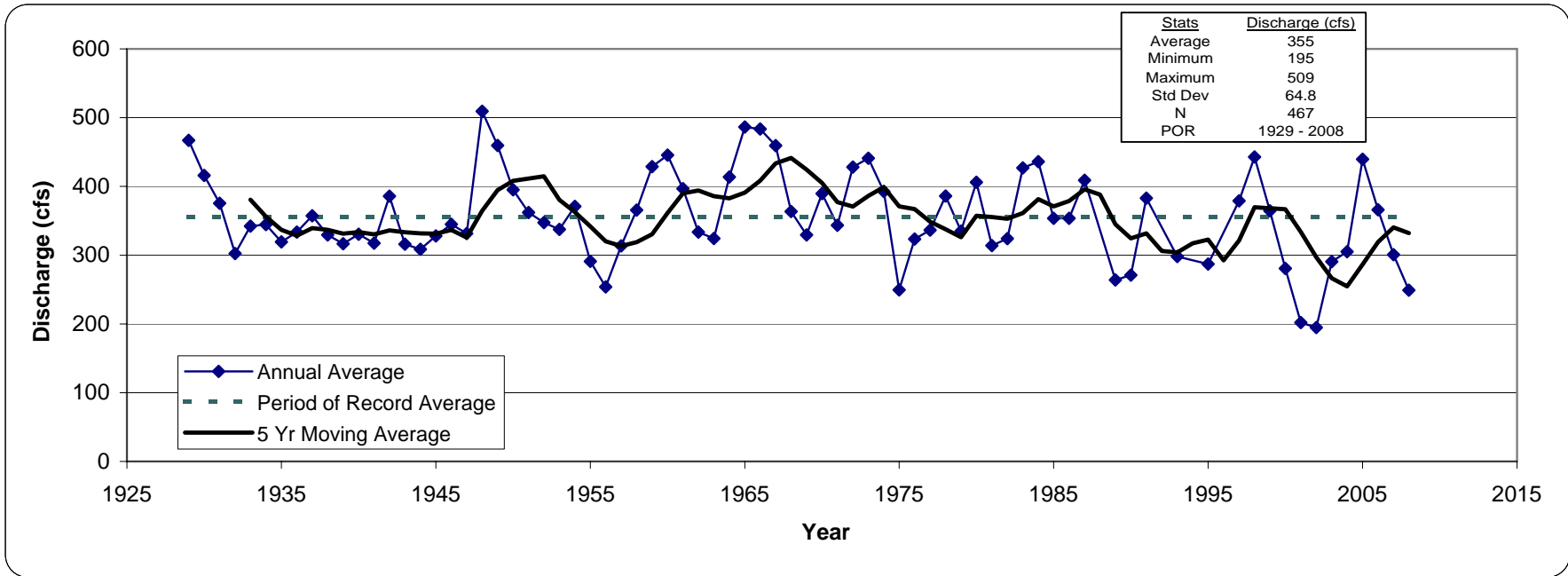


B



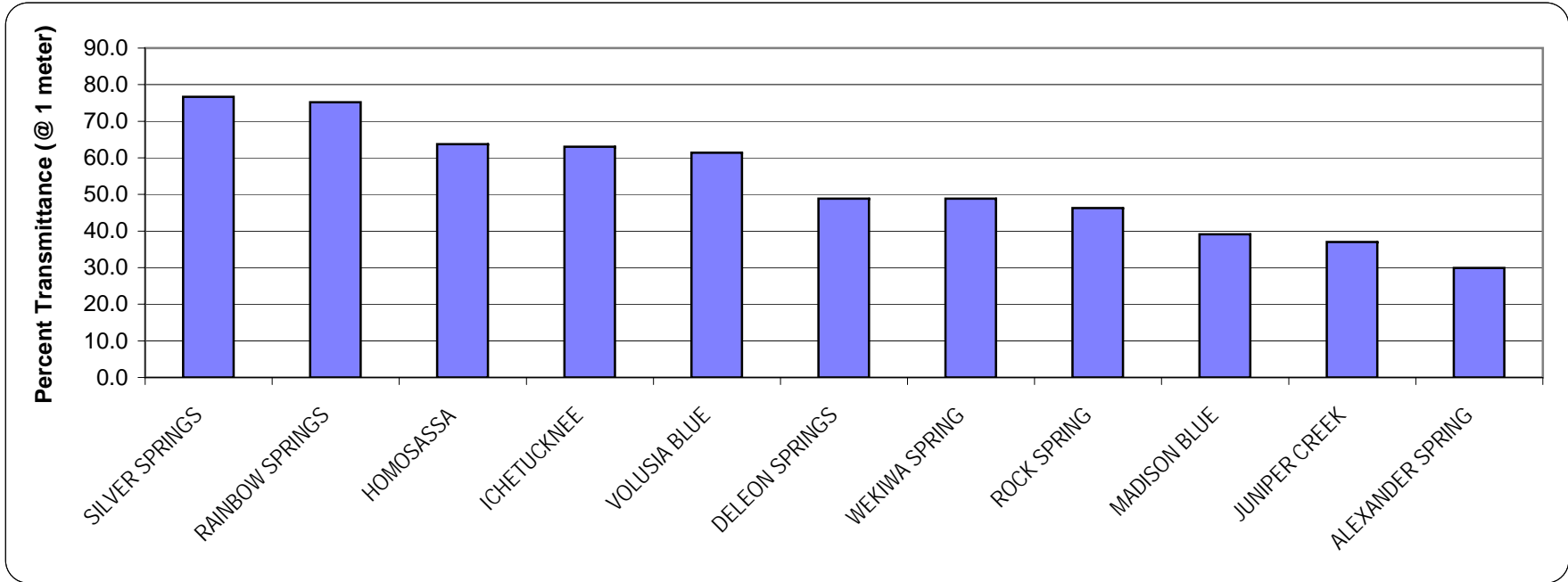
D-

* Indicator Springs

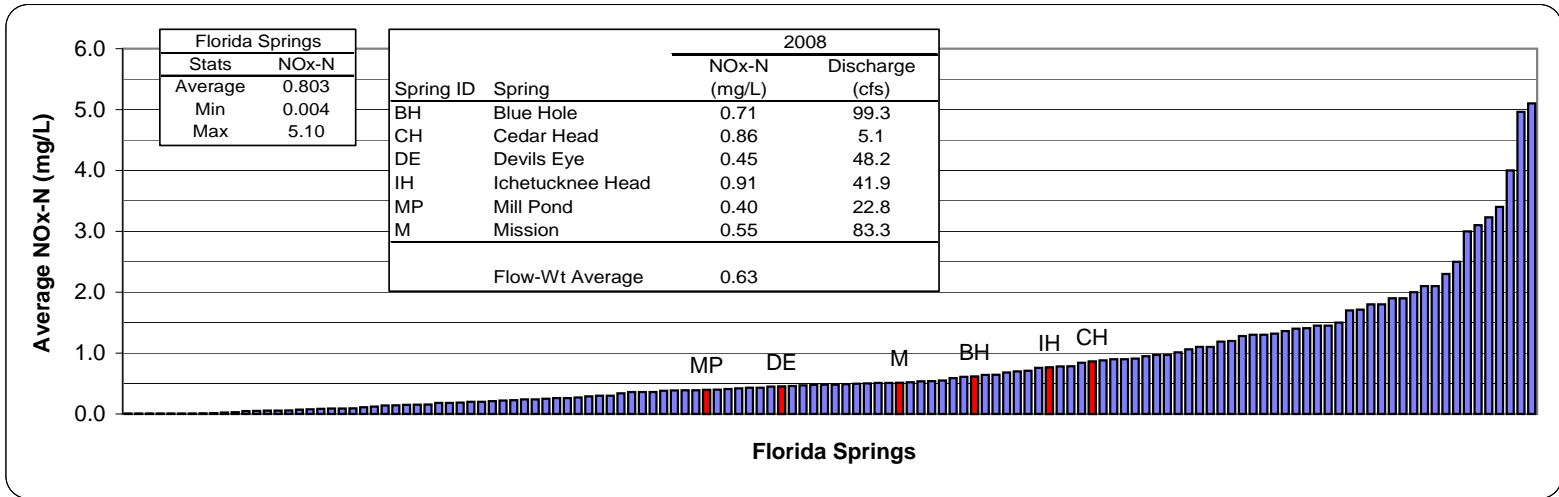
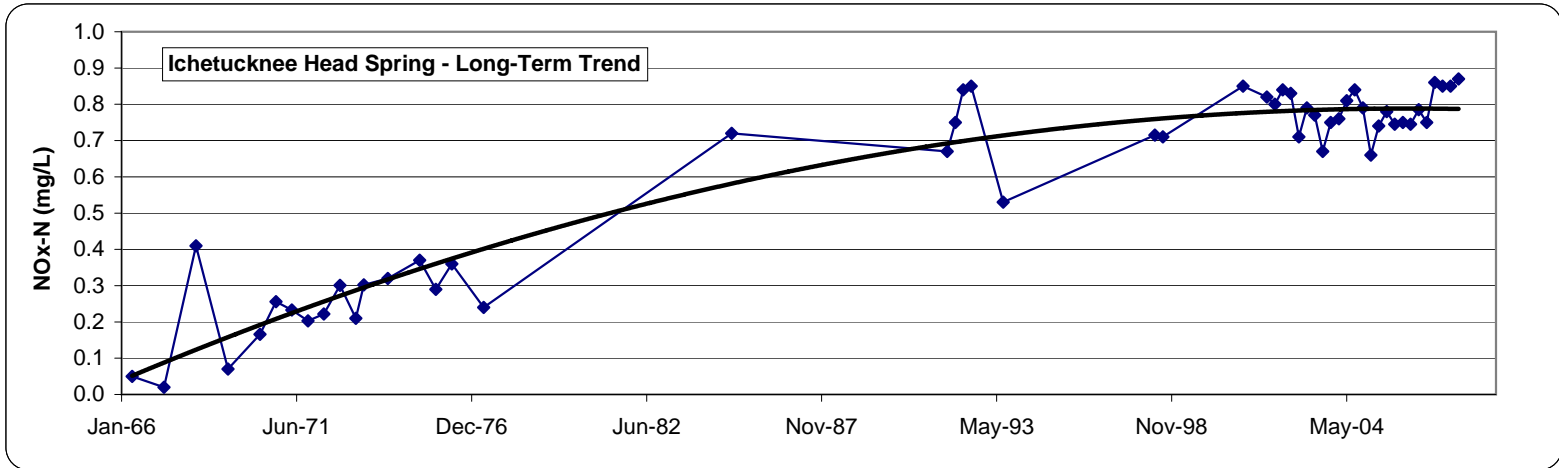


Spring Discharge @ US 27	2008 Grade	2008 Average *	A: > 300 cfs B: 250 - 300 cfs C: 200 - 249 cfs D: 150 - 199 cfs F: < 150 cfs
	A	332 cfs	

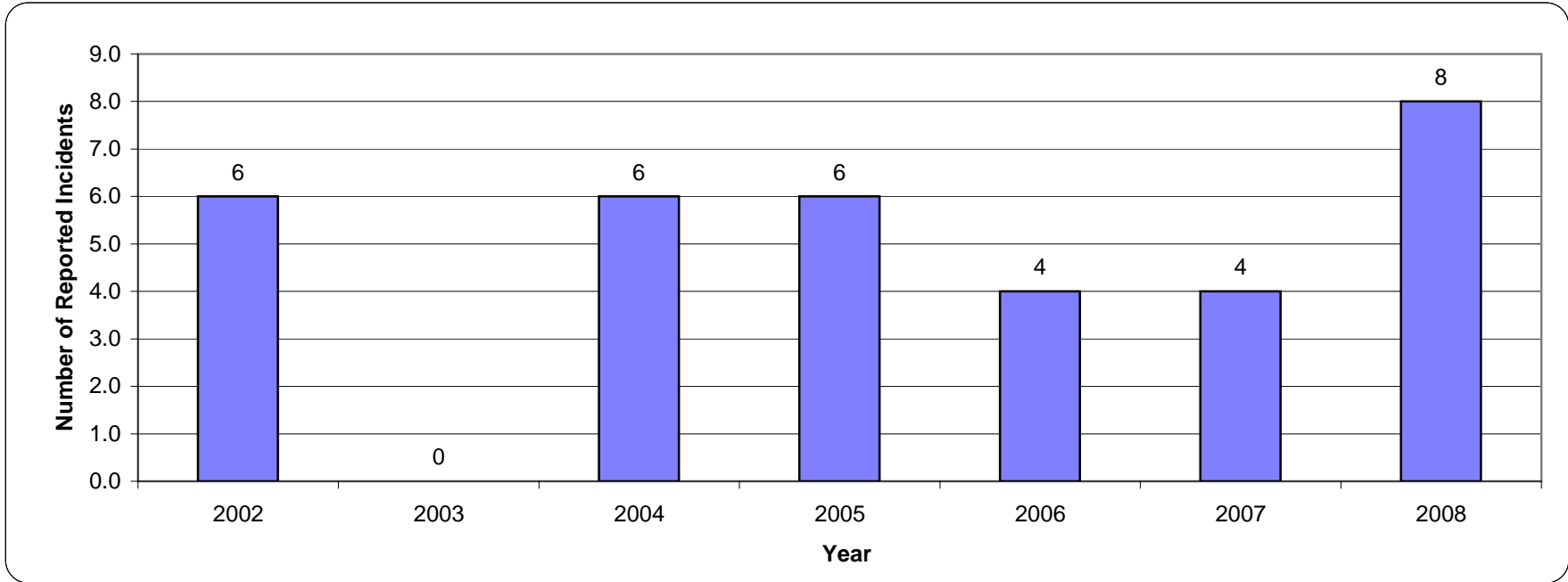
* Average of previous 5 years



Water Clarity @ Spring Run	2008 Grade	2008 Average	A: > 65 % B: 55 - 65 % C: 45 - 54 % D: 35 - 44 % F: < 35 %
	B+	63% Transmittance @ 1 meter	

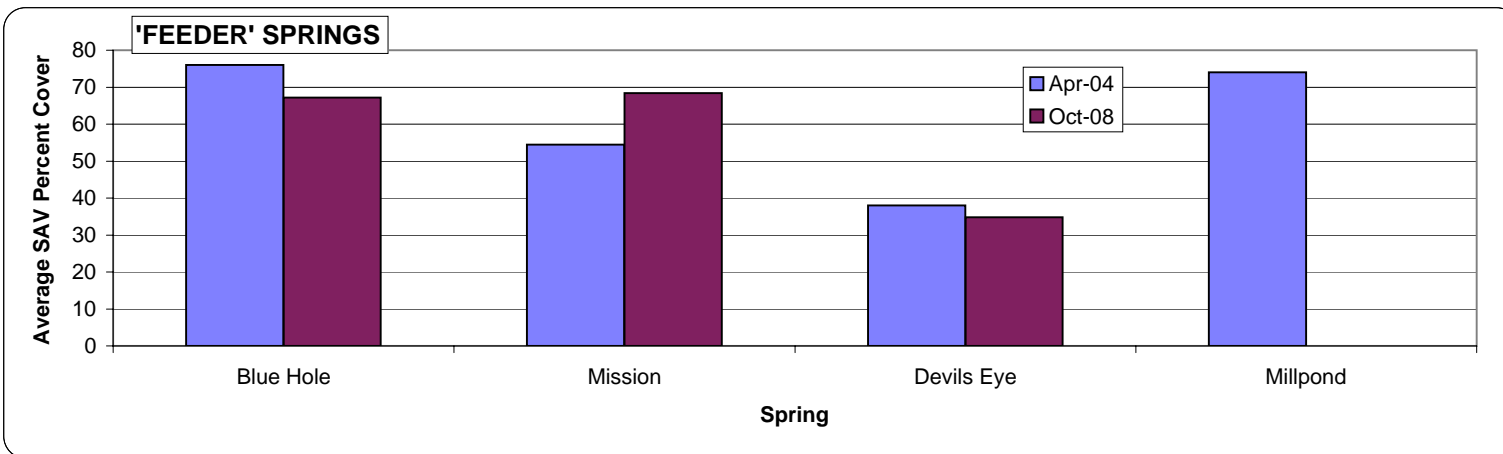
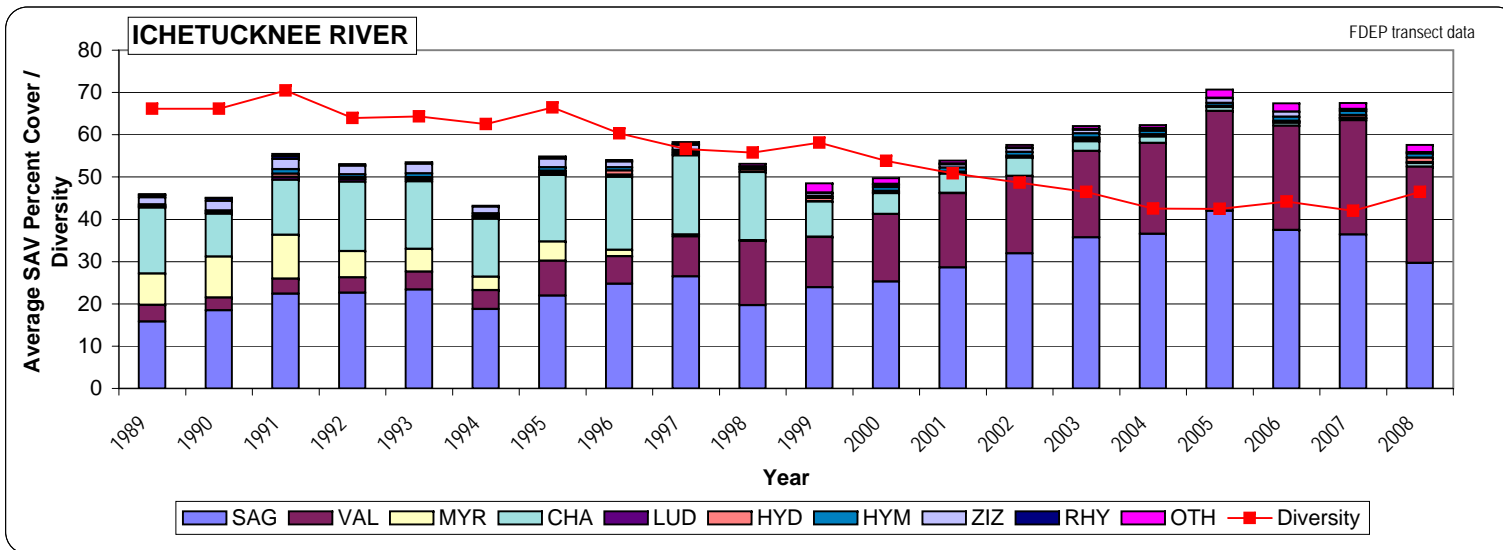


Nitrate Concentration @ Spring Run	2008 Grade	2008 Average	A: < 0.15 mg/L
	D+	0.63 mg/L	B: 0.15 - 0.35 mg/L
			C: 0.36 - 0.60 mg/L
			D: 0.61 - 0.90 mg/L
			F: > 0.90 mg/L



Allergic Reactions	2008 Grade	Reported * 2008 Incidents	A: < 10 incidents B: 10 - 30 incidents C: 31 - 60 incidents D: 61 - 100 incidents F: > 100 incidents
	B+	8 Incidents	

* Suspect under-reporting



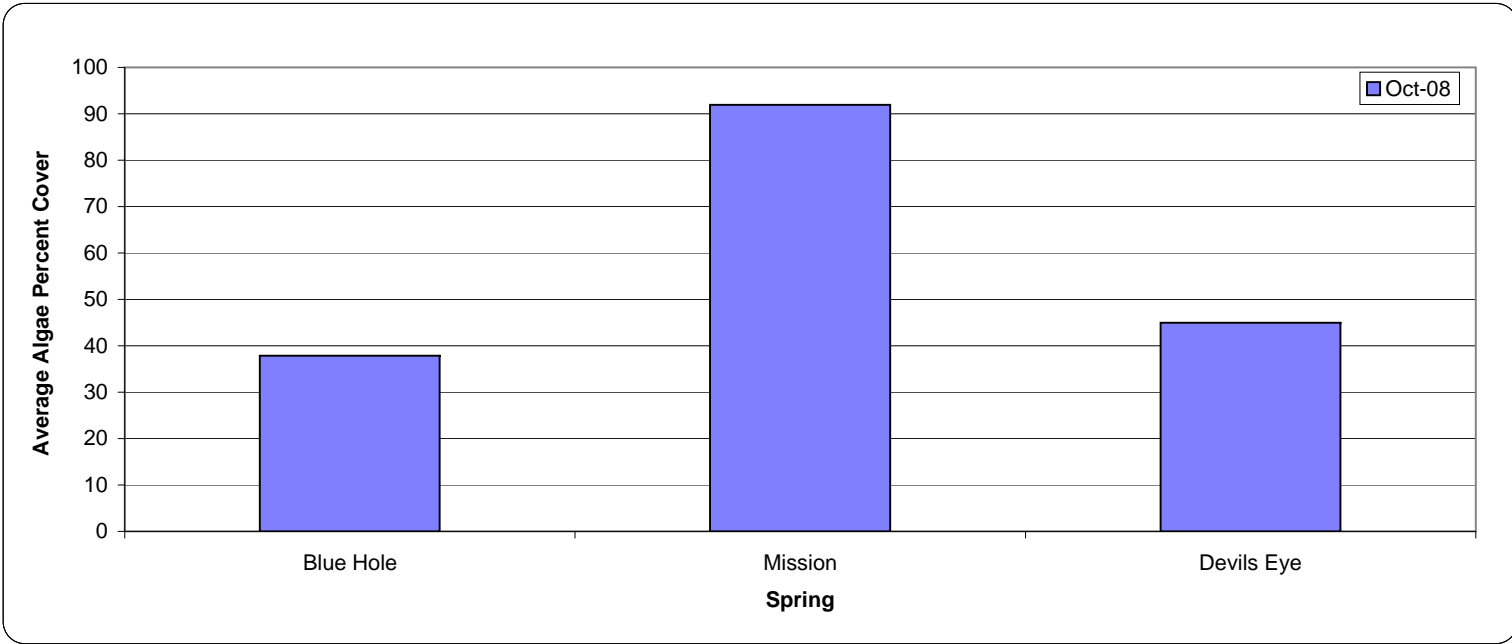
Submerged Aquatic Vegetation	2008 Grade	2008 Average	A: > 60 % B: 50 - 60 % C: 40 - 49 % D: 30 - 39 % F: < 30 %
	B	52.0 %	

SAG = Sagittaria kurziana
 VAL = Valisineria americana
 MYR = Myriophyllum heterophyllum

CHA = Chara (prob.) zeylonica
 LUD = Ludwigia repens
 HYD = Hydrocotyle (prob.) verticillata

HYM = Hymenocallis rotata
 ZIZ = Zizania aquatica
 RHY = Rhynchospora sp. or Carex sp.

OTH = Others



Algae Cover (Indicator Springs)	2008 Grade	2008 Average	A: < 15 % B: 15 - 29 % C: 30 - 44 % D: 45 - 60 % F: > 60 %
	D-	58.3 %	