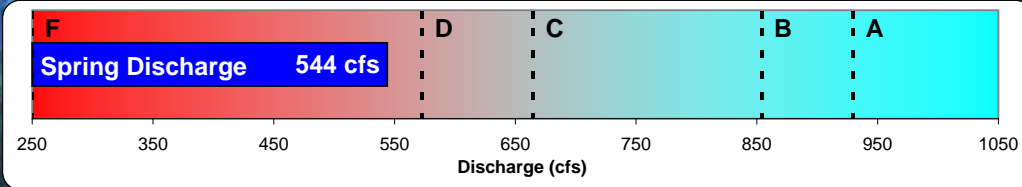


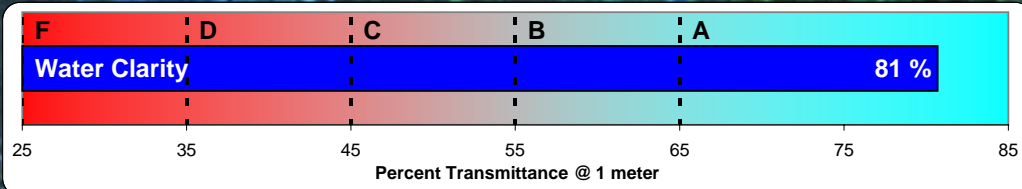
# SILVER SPRINGS AND RIVER ENVIRONMENTAL HEALTH - 2009 REPORT CARD

## 2009 GRADE

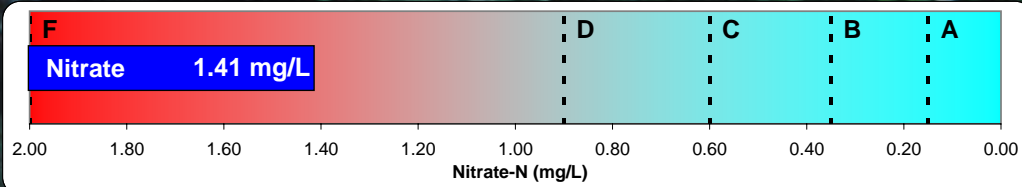
## C+



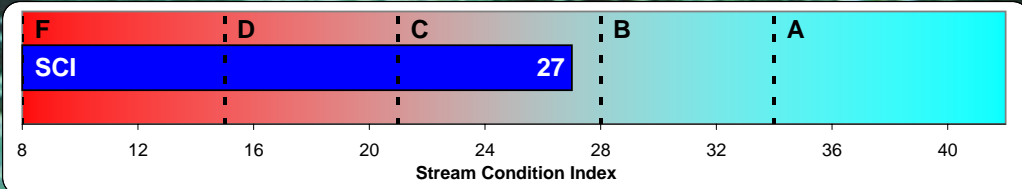
F



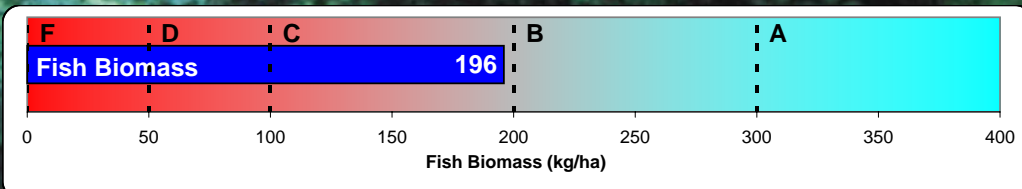
A+



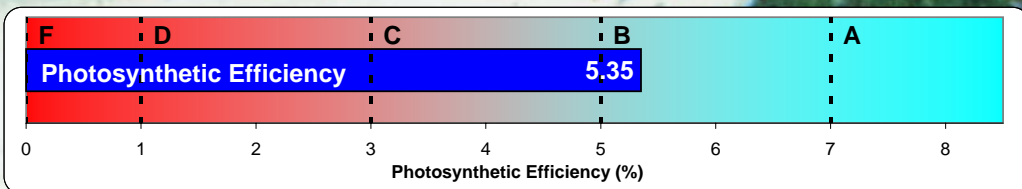
F



C+

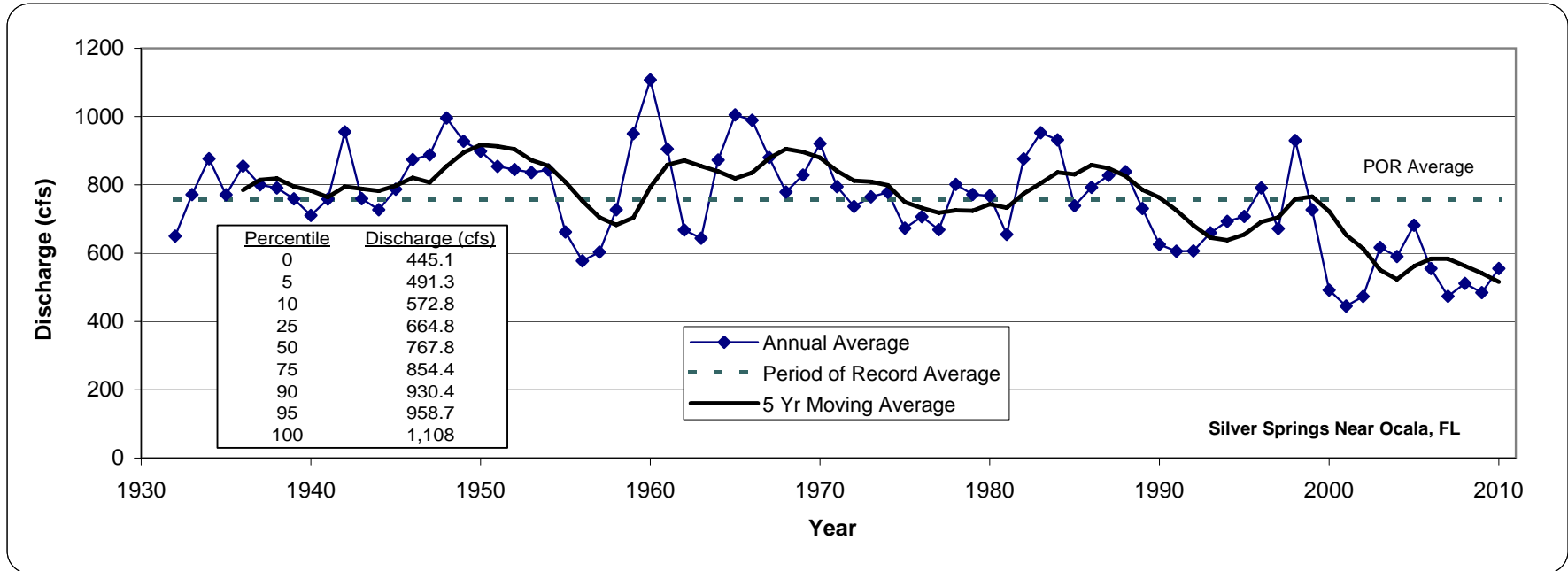


C+



B-

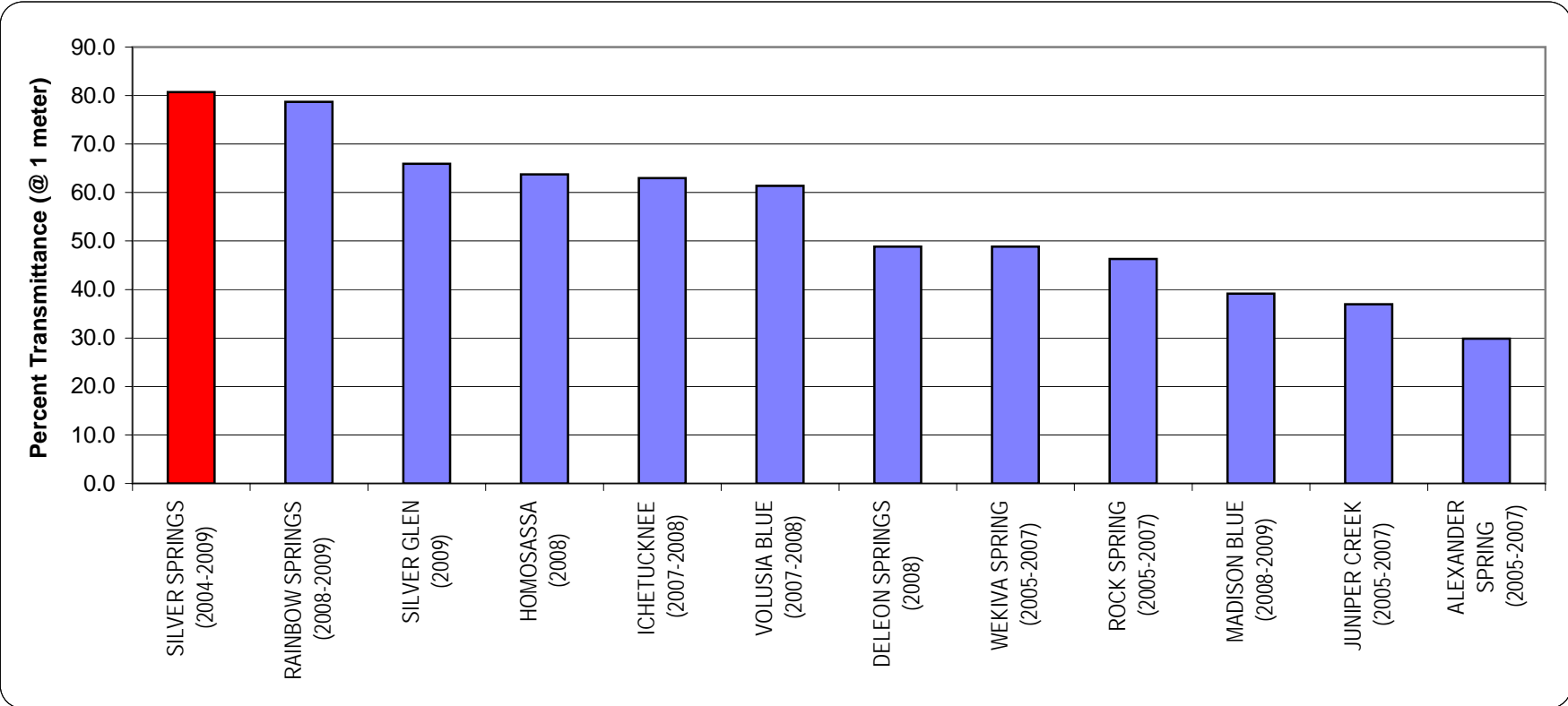
# SILVER SPRINGS AND RIVER



<b>Spring Discharge</b>	<b>Grade</b>	<b>Average (2005-10)</b>	<b>A: &gt; 930 cfs</b> <b>B: 854 - 929 cfs</b> <b>C: 665 - 853 cfs</b> <b>D: 573 - 664 cfs</b> <b>F: &lt; 572 cfs</b>
	<b>F</b>	<b>544 cfs</b>	



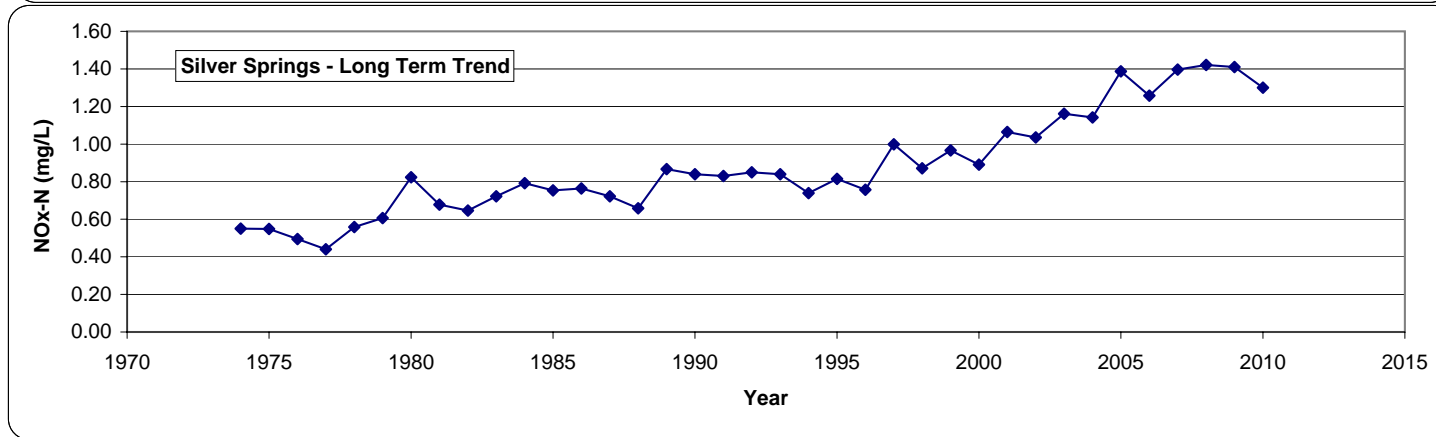
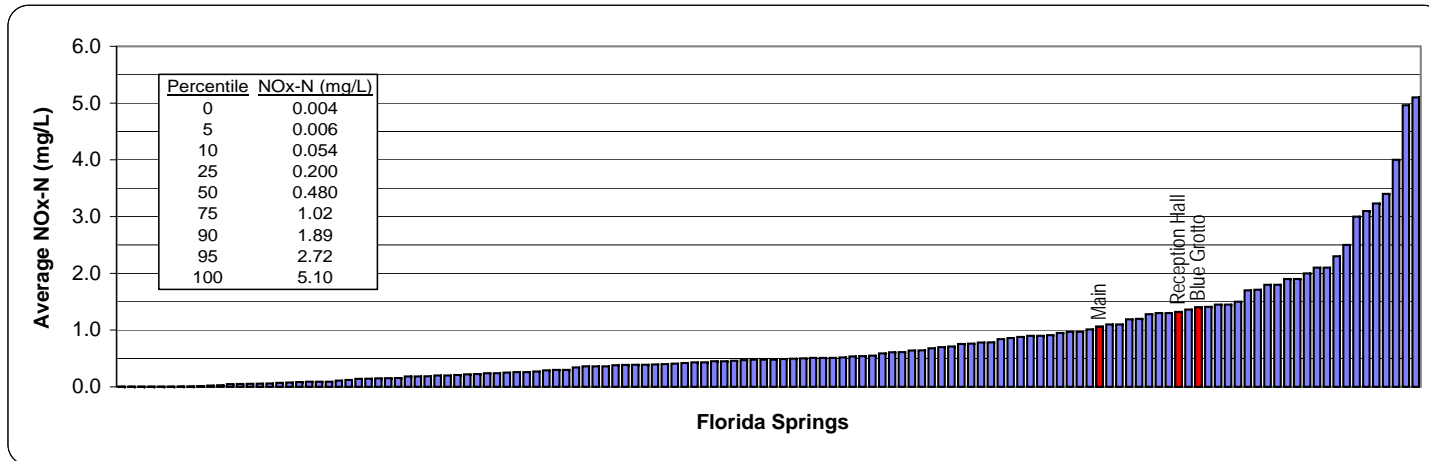
# SILVER SPRINGS AND RIVER



<b>Water Clarity @ Spring Run</b>	<b>Grade</b>	<b>Average (2004-09)</b>	<b>A: &gt; 65 %</b> <b>B: 55 - 65 %</b> <b>C: 45 - 54 %</b> <b>D: 35 - 44 %</b> <b>F: &lt; 35 %</b>
	<b>A+</b>	<b>80.7%</b> Transmittance @ 1 meter	



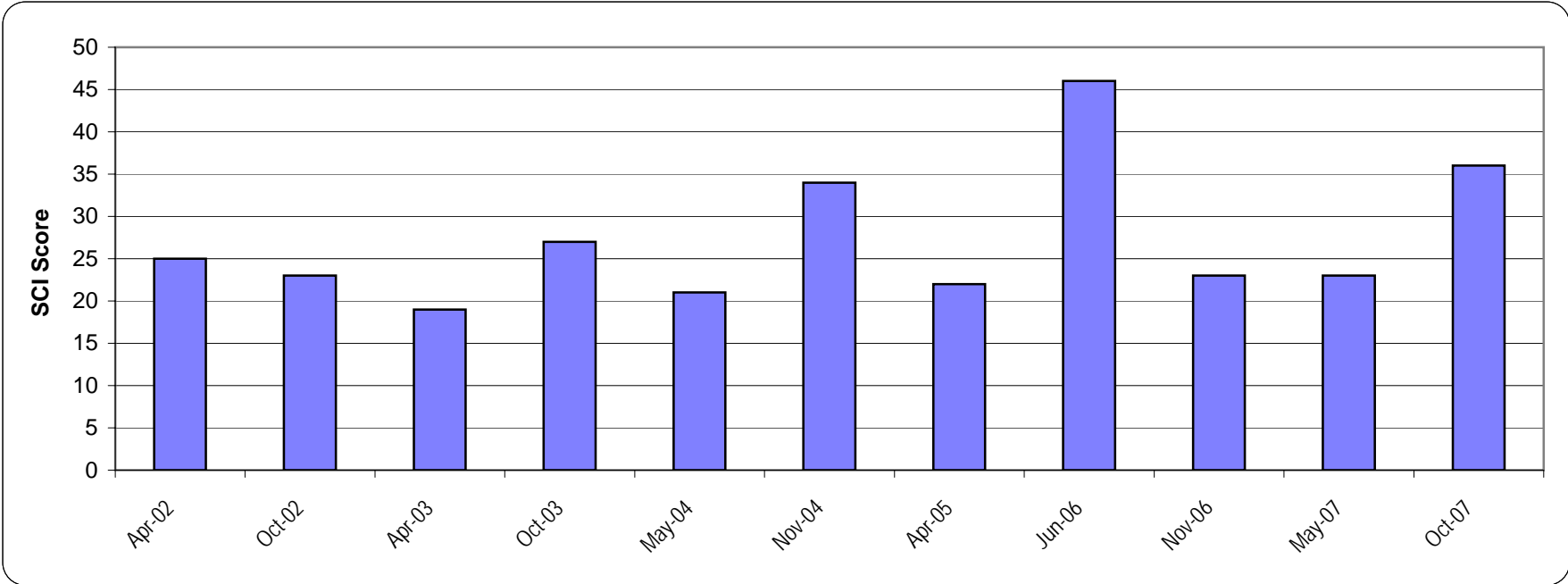
# SILVER SPRINGS AND RIVER



<b>Nitrate Concentration @ Spring Boil</b>	<b>Grade</b>	<b>Average (2009)</b>	<b>A: &lt; 0.15 mg/L</b> <b>B: 0.15 - 0.35 mg/L</b> <b>C: 0.36 - 0.60 mg/L</b> <b>D: 0.61 - 0.90 mg/L</b> <b>F: &gt; 0.90 mg/L</b>
	<b>F</b>	<b>1.41 mg/L</b>	



# SILVER SPRINGS AND RIVER

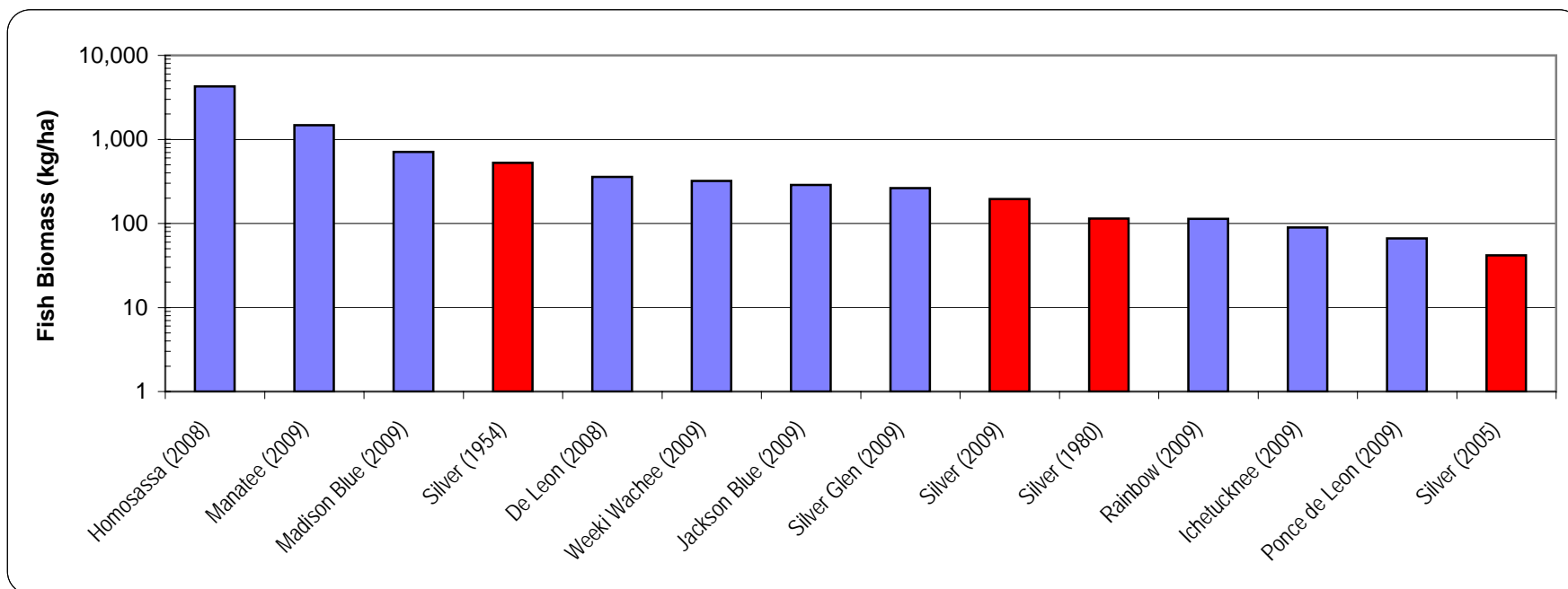


<b>SCI Score @ Spring Run</b>	<b>Grade</b>	<b>Average (2002-07)</b>	<b>A: &gt; 34</b>
	<b>C+</b>	<b>27 SCI Index</b>	<b>B: 28-33</b> <b>C: 21-27</b> <b>D: 15-21</b> <b>F: &lt; 14</b>

\* SCI = Stream Condition Index (FDEP)



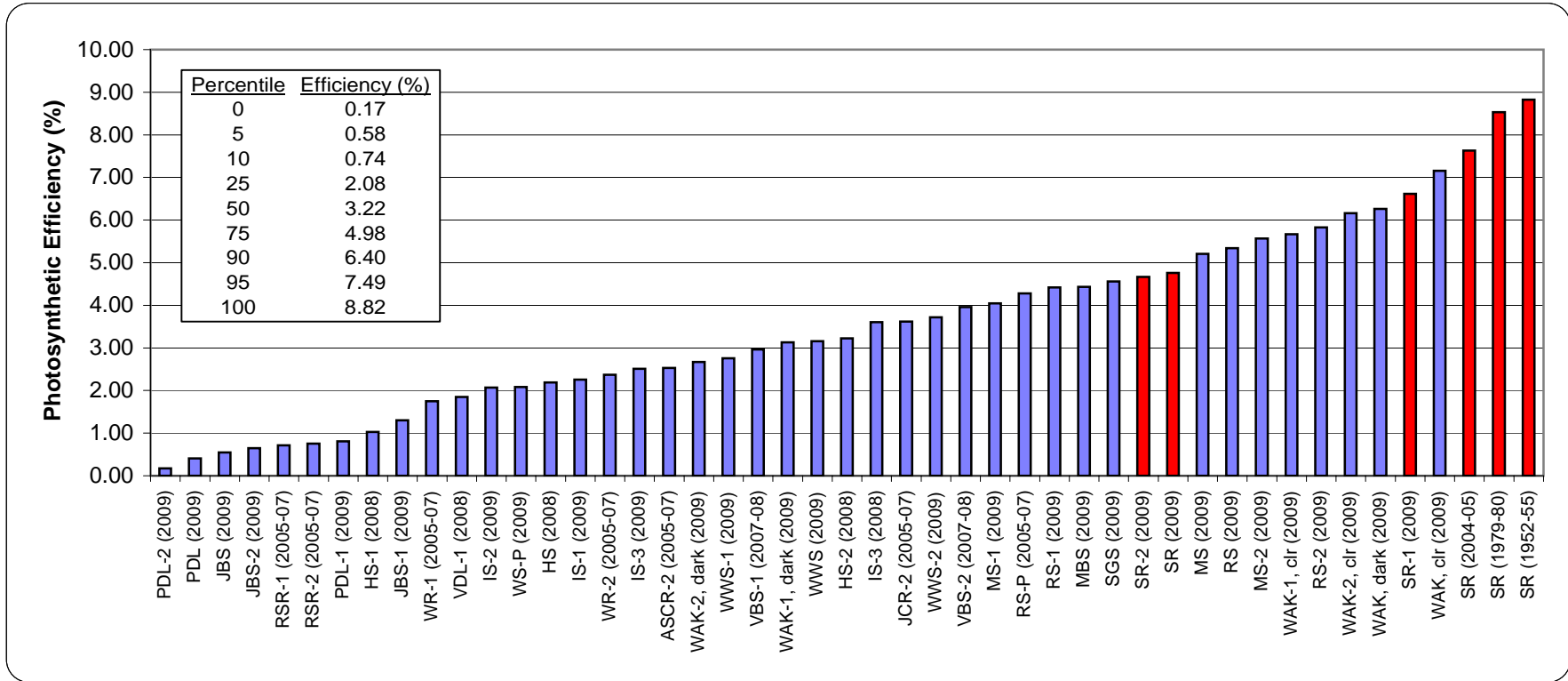
# SILVER SPRINGS AND RIVER



Fish Biomass	Grade	Average (2009)	<b>A: &gt; 300</b> <b>B: 200 - 299</b> <b>C: 100 - 199</b> <b>D: 50 - 99</b> <b>F: &lt; 50</b>
	<b>C+</b>	<b>196</b> Biomass kg/ha	



# SILVER SPRINGS AND RIVER



<b>Photosynthetic Efficiency</b>	<b>Grade</b>	<b>Average (2009)</b>	<b>A: &gt; 7.0</b> <b>B: 5.0 - 6.99</b> <b>C: 3.0 - 4.99</b> <b>D: 1.0 - 2.99</b> <b>F: &lt;1.0</b>
	<b>B-</b>	<b>5.35 %</b>	

